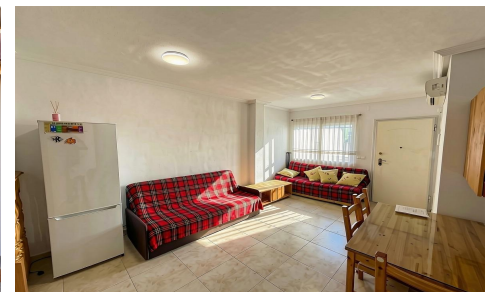




GP70805F

Duplex in Lo Pagan

€160,000



3



2



85m²



N/A



N/A

Discover your new home in the beautiful area of La Puntica, Lo Pagan! ? This attractive duplex-style house has a floor area of 85 m² and is situated just 500 metres from the sea ?. With an open-plan design that allows you to enjoy plenty of natural light ?, this property is in good condition and ready to move into. The property has three comfortable bedrooms ?, ideal for adapting to your family's needs. You'll also be able to make the most of its two modern bathrooms ??, designed to offer comfort and functionality. Additional features include a spacious terrace, perfect for relaxing or hosting outdoor gatherings ??, as well...(Ask for More Details!)